

NOMURA

Japan Strategic Value Fund

Objectives and investment policy

For full investment objectives and policy details please refer to the prospectus.

Risk and reward profile

- The Fund is classified in the category above because of the past behaviour of the share price. Where no share price history is available for any part of the last five years, the history of an appropriate benchmark or share class has been used in its place.
- Please note that even the lowest risk class can lose you money and that extreme market circumstances can mean you suffer severe losses in all cases and that the fund is not guaranteed to always stay in the same category.
- The indicator does not take into account the following material risks of investing in this Fund:
 - Currency exchange rate fluctuations may have a positive or negative impact on the value of your investment.
 - Currency hedged share classes aim to deliver a return that is as close as possible to the base currency performance of a fund, by reducing the effect of exchange rate movements between the base currency and the hedged currency. However, these techniques may not be fully effective in completely removing the exchange rate risk.
- By focusing its investments in Japan, the fund will have greater exposure to the market, political and economic risks of that country than if it was more diversified across a number of countries.
- A full list of risks that may be applicable to this Fund can be found in the Prospectus.

Charges

The charges you pay are used to pay the costs of running the Fund, including the costs of marketing and distributing it. These charges reduce the potential growth of your investment.

One-off charges taken before or after you invest

Entry charge	5.00%
Exit charge	0.00%

These are the maximum charges that we might take out of your money before it is invested and before we pay out the sale proceeds of your investment. In some cases, you might pay less and you should speak to your financial adviser about this.

Charges taken from the Fund over a year

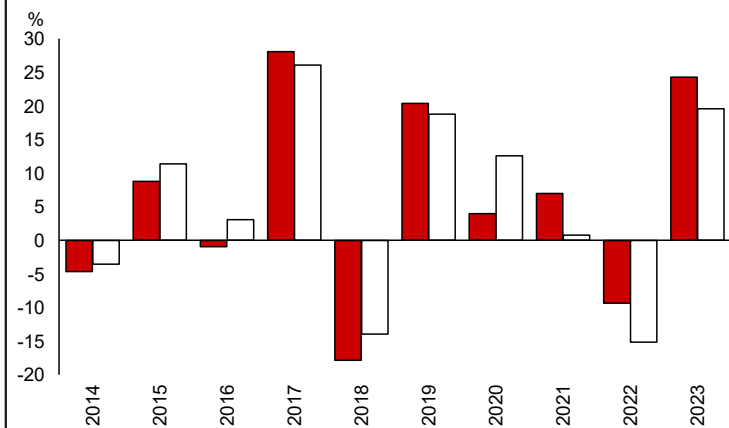
Ongoing charges	1.53%
-----------------	-------

Charges taken from the Fund under specific conditions

Performance fee	0
-----------------	---

- The ongoing charges figure is based on the last year's expenses and may vary from year to year. It excludes the costs of buying or selling assets for the Fund (unless these assets are shares of another fund).
- The ongoing charges figure is calculated as at 30/06/2024.
- You can find more details about the charges by looking at the Fees and Expenses section of the Fund's Prospectus which is available from www.nomura-asset.co.uk.

Past performance



- You should be aware that past performance is not a guide to future performance.
- Fund launch date: 26/08/2009.
- Share/unit class launch date: 10/11/2011.
- Performance is calculated in USD.
- All charges and fees, except any entry, exit and switching charge, have been included within the performance.
- * TSE TOPIX

	2014	2015	2016	2017	2018	2019	2020	2021	2022	2023
Fund	-4.7	8.8	-1.0	28.1	-17.9	20.4	4.0	7.0	-9.4	24.3
Index*	-3.6	11.4	3.1	26.1	-14.0	18.8	12.6	0.8	-15.2	19.6

Source: FE fundinfo 2024

Practical information

- This document describes only one share class and other share classes are available. Information on how to buy, sell and switch shares is available by contacting Nomura Funds Ireland plc, c/o Brown Brothers Harriman Fund Administration Services (Ireland) Limited, 30 Herbert Street, Dublin 2, Ireland. Telephone: +353-1-603-6273 / +44 207 521 3000. Website: www.nomura-asset.co.uk. Email: info@nomura-asset.co.uk.
- Further detailed information about the fund and other share classes of the fund, including its prospectus and latest annual and half-yearly reports, is available free of charge contacting us (see above). The documents are available in English.
- Nomura Funds Ireland plc offers a range of funds with different investment objectives. The prospectus and annual and half-yearly reports cover all funds in Nomura Funds Ireland plc. If one fund has debts, the assets of the other funds may not be used to settle these.
- Other practical information, including current share prices for the fund, may be obtained from our website or by contacting us (see above).
- The fund's Custodian is Brown Brothers Harriman Trustee Services (Ireland) Limited.
- The tax legislation of Ireland may have an impact on your personal tax position.
- Nomura Funds Ireland plc may be held liable solely on the basis of any statement contained in this document that is misleading, inaccurate or inconsistent with the relevant parts of the prospectus for this fund.
- Bridge Fund Management is authorised and supervised by the Central Bank of Ireland. Nomura Asset Management UK Limited is authorised and regulated by the FCA.
- You are entitled to switch from one sub-fund to another, please see the Prospectus or contact your financial advisor for further details.
- Details of the up-to-date remuneration policy of the fund manager are published online at <https://bridgefundservices.com/disclosures/>
- This includes the description of how remuneration and benefits are awarded for employees, and information on the remuneration committee.
- The manager provides a paper copy free of charge upon request.