



Key Investor Information

This document provides you with key investor information about this Fund. It is not marketing material. The information is required by law to help you understand the nature and the risks of investing in this Fund. You are advised to read it so you can make an informed decision about whether to invest.

Lemanik Sicav - European Flexible Bond - Capitalisation Retail EUR Class

(ISIN: LU0162047491) European Flexible Bond (the 'Fund') is a Sub-Fund of Lemanik Sicav (the 'Company'). Lemanik Asset Management S.A. is the Management Company (the 'Management Company') to the Fund.

Objectives and Investment Policy

- The aim of the Fund is to maximise the return of the investor.
- This Fund will invest at least 70% of its net assets in fixed income debt securities, Money Market Instruments or assimilated instruments issued by governments, international agencies, supra-national entities or private companies, with a focus on European issuers and marginal exposure to non-European one without any limitation in duration or rating. The reference currency of the Fund will be EUR, it is not excluded to invest in bond denominated in various currencies different from EUR, to exploit opportunities in terms of potential market inefficiency.

The Fund's exposure to contingent convertible bonds is limited to 20% of its net assets.

- The Fund's strategy is also to invest in Financial Derivatives Instruments (instruments whose prices are dependent on one or more underlying assets 'FDIs'). The Investment Manager is free to manage the exposure to relevant exchange rates and may decide to hedge (an investment position intended to offset potential losses) or not to hedge exchange risks. The Fund may also invest in a wide range of securities. On an ancillary basis,

the Fund may hold cash and cash equivalents.

- The Fund is actively managed without any reference to a benchmark. The Investment Manager has discretion over the composition of its portfolio subject to this objective and investment policy.
- Sale of shares in the Fund can be made on any business day.
- The Fund does not intend to distribute dividends. Any income arising from the Fund's investments is reinvested and reflected in the value of your shares. However, the annual general meeting of shareholders may decide to distribute such income.
- The Fund may use FDIs in order to reduce the possibility of financial losses or to achieve higher gains.
- Recommendation: this Fund may not be appropriate for investors who plan to withdraw their money within five years.
- The Investment Manager may use a hedging strategy that aims to ensure returns for investors are consistent with the Fund's investment objective.

Risk and Reward Profile

Lower risk ← Higher risk
Potentially lower rewards Potentially higher rewards



- The lowest category does not mean a risk free investment.
- The risk and reward profile may change over time.
- Historical data may not be a reliable indication for the future.
- This Fund is in category 4, since the share price has a moderate volatility and therefore the risk of loss as well as the expected reward is generally medium.

The following risks may not be fully captured by the risk and reward indicator:

- Credit Risk: The Fund can invest a material part of its assets in bonds. Their issuers can become insolvent, thus their bonds can either partly or entirely diminish in value.
- Currency Risk: As the Fund invests in securities denominated in a number of different currencies, movements in exchange rates may, when not hedged, cause the value of the investments to increase or decrease.
- Derivative Risk: Derivative values can rise and fall at a greater rate than equities and debt instruments. Losses can be greater than the initial investment. This risk is minimised by holding a diverse selection of non derivative investments.
- Interest Risk: Risk that interest rates rise and reduce the market value of an investment.

A complete description of risk factors is set out in the Prospectus in the section entitled 'Special consideration on risks'.

Charges

The charges you pay are used to pay the costs of running the Fund, including the costs of marketing and distribution. These charges reduce the potential growth of your investment.

The entry and exit charges shown are maximum figures. In some cases you might pay less. Please refer to your financial advisor or the distributor for the actual charges.

The ongoing charges figure is based on expenses for the year ending 31 December 2021.

This figure may vary from year to year. It excludes:

- Performance Fees.
- Portfolio transaction costs, except in the case of an entry/exit charge paid by the Fund when buying or selling units in another Fund.

For more information on charges, please see the 'Charges and costs' section of the Prospectus.

One-off charges taken before or after you invest

Entry charge	3.00% *
Exit charge	0.00%

This is the maximum that might be taken out of your money before it is invested or before the proceeds of your investment are paid out.

* this percentage could be increased up to maximum 5% of the applicable Net Asset Value, only within the investment programmes and at discretion of the financial intermediaries involved in the marketing of the shares

Charges taken from the Fund over a year

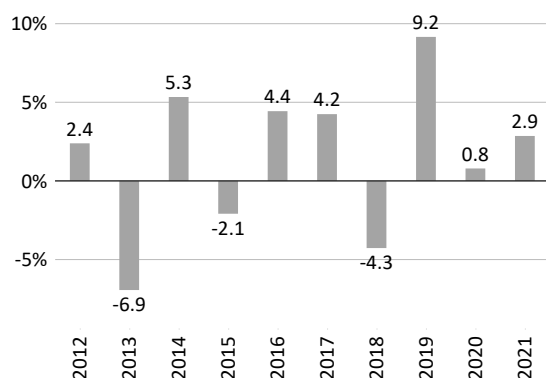
Ongoing charges	2.11%
------------------------	-------

Charges taken from the Fund under certain specific conditions

Performance Fee	10% of the net increase as a result of operations of each year. A Performance Fee shall be owed if the Net Asset Value per Share of the respective Share Class on a Valuation Day exceeds the adjusted highwatermark (outperformance). The Performance Fee will be paid in arrears after the end of each year
	Actual last year fee charged: 0.63%.

Past Performance

Historic performance to 31 December 2021



■ Lemanik Sicav - European Flexible Bond - Capitalisation Retail EUR Class

- The Fund was launched on 21 February 2003. This Share Class was launched on 19 June 2008.
- Past performance has been calculated in EUR.
- The returns in this table include all fees and expenses and show percentage year-on-year changes in the value of the Fund.
- Past returns are not a reliable indicator or guide of future returns.

Practical Information

- This Key Investor Information Document (KIID) is specific to this share class. Other Share Classes are available for this Fund as described in the Fund's prospectus.
- **Depository:** The Fund's assets are held with RBC Investor Services Bank S.A. and are segregated from the assets of other sub-funds of the Company. The assets of the Fund cannot be used to pay the debts of other sub-funds of the Company.
- **Further information and price availability:** Further information about the Company (including the current Prospectus and most recent annual report) is available in English, and information about the Fund and other share classes (including the latest prices of shares and translated versions of this document), are available free of charge on www.lemanikgroup.com or by making a written request to Lemanik Asset Management S.A., 106, route d'Arlon, L-8210 Mamer, Luxembourg or by emailing info@lemanik.lu.
- **Taxation:** The Fund is subject to taxation legislation in Luxembourg, which

may have an impact on your personal tax position as an investor in the Fund.

- **Liability:** Lemanik Asset Management S.A. may be held liable solely on the basis of any statement contained in this document that is misleading, inaccurate or inconsistent with the relevant parts of the Prospectus for the Fund.
- **Specific information:** You may convert shares in the Fund for shares in other Sub-Funds. Further information and provisions are in the Prospectus.
- **Remuneration policy:** A paper copy of the up-to-date remuneration policy of the Management Company, including, but not limited to, a description of how remuneration and benefits are calculated, and the persons responsible for awarding the remuneration and benefits, is available free of charge upon request. A detailed description of the policy is also available at www.lemanikgroup.com/management-company-service_substance_governance.cfm.