

# Key Investor Information

This document provides you with key investor information about this fund. It is not marketing material. The information is required by law to help you understand the nature and the risks of investing in this fund. You are advised to read it so you can make an informed decision about whether to invest.

JPMorgan Investment Funds

ISIN: LU0661553403

## JPM Income Opportunity A (perf) (acc) - CHF (hedged)

a Share Class of JPMorgan Investment Funds – Income Opportunity Fund. The management company is JPMorgan Asset Management (Europe) S.à r.l.

### Objectives, Process and Policies

#### INVESTMENT OBJECTIVE

To achieve a return in excess of the benchmark by exploiting investment opportunities in, amongst others, the debt and currency markets, and using derivatives where appropriate.

#### INVESTMENT PROCESS

##### Investment approach

- Uses an absolute return oriented approach to target uncorrelated, low volatility returns over the medium term regardless of market conditions.
- Flexibility to draw on diversified sources of returns across three distinct strategies: tactical rotation between traditional fixed income sectors, alternative strategies such as relative value trading, and hedging strategies.

**Share Class Benchmark** ICE BofA SARON Overnight Rate Index

##### Benchmark uses and resemblance

- Performance comparison.
- Performance fee calculation.

The Sub-Fund is actively managed without reference or constraints relative to its benchmark.

#### POLICIES

**Main investment exposure** The majority of assets invested in a broad range of government and corporate debt securities from issuers anywhere in the world, including emerging markets.

The Sub-Fund is expected to invest between 10% and 30% of its assets in mortgage-backed securities (MBS) and/or asset-backed securities (ABS) of any credit quality, however, due to the unconstrained investment approach, the actual investment level may vary. MBS which may be agency (issued by quasi US government agencies) and non-agency (issued by private institutions) refers to debt securities that are backed by mortgages, including residential and commercial mortgages, and ABS refers to those that are backed by other types of assets such as credit card debt, car loans, consumer loans and equipment leases.

The Sub-Fund may also invest in other assets such as convertible securities, equities, ETFs and REITs. To a limited extent, the Sub-Fund may invest in distressed debt securities and securities in default.

There are no credit quality restrictions applicable to the investments. Up to 100% of assets in Deposits with Credit Institutions, money market instruments and money market funds for investment and defensive purposes.

**Other investment exposures** Catastrophe bonds to a limited extent; up to 5% in contingent convertible bonds.

Up to 20% of net assets in Ancillary Liquid Assets for managing cash subscriptions and redemptions as well as current and exceptional payments. Up to 100% of net assets in Ancillary Liquid Assets for defensive purposes on a temporary basis if justified by exceptionally unfavourable market conditions.

**Derivatives** Used for: investment purposes; hedging; efficient portfolio management. Types: see [Sub-Fund Derivative Usage](#) table under [How the Sub-Funds Use Derivatives, Instruments and Techniques](#) in the Prospectus. TRS including CFD: 0-25% expected; 25% maximum. Global exposure calculation method: absolute VaR. Expected level of leverage from derivatives: 350% indicative only. Leverage may significantly exceed this level from time to time.

**Currencies** Sub-Fund Base Currency: USD. Currencies of asset denomination: any. Hedging approach: typically hedged to Base Currency (excluding active currency positions).

This Share Class seeks to minimise the effect of exchange rate fluctuations between the Sub-Fund's Base Currency and the Share Class Currency.

**Redemption and Dealing** Shares of the Sub-Fund may be redeemed on demand, with dealing normally on a daily basis.

**Distribution Policy** This Share Class does not pay dividends. Earned income is retained in the NAV.

For an explanation of some of the terms used in this document, please visit the glossary on our website at [www.jpmorganassetmanagement.lu](http://www.jpmorganassetmanagement.lu)

### Risk and Reward Profile



The above rating is based on the historic volatility of the Net Asset Value of the Share Class over the last five years and the volatility which is consistent with the risk limit of the Sub-Fund.

The risk and reward category shown above is not guaranteed to remain unchanged and may change over time.

A Share Class with the lowest risk rating does not mean a risk-free investment.

**Why is this Share Class in this category?** This Share Class is classified in category 3 because its Net Asset Value has shown low to medium fluctuations historically and this category is consistent with the risk limit of the Sub-Fund.

#### OTHER MATERIAL RISKS

The Sub-Fund is subject to **Investment risks** and **Other associated risks** from the techniques and securities it uses to seek to achieve its objective.

The table on the right explains how these risks relate to each other and the **Outcomes to the Shareholder** that could affect an investment in the Sub-Fund.

Investors should also read [Risk Descriptions](#) in the Prospectus for a full description of each risk.

#### Investment risks Risks from the Sub-Fund's techniques and securities

Techniques	Securities	
Derivatives	Catastrophe bonds	– Unrated debt
Hedging	Contingent convertible bonds	– Distressed debt
	Debt securities	Emerging markets
	– Government debt	Equities
	– Investment grade debt	MBS/ABS
	– Below investment grade debt	REITs
		UCITS, UCIs & ETFs

#### Other associated risks Further risks the Sub-Fund is exposed to from its use of the techniques and securities above

Credit Currency	Interest rate Liquidity	Market
-----------------	-------------------------	--------

#### Outcomes to the Shareholder Potential impact of the risks above

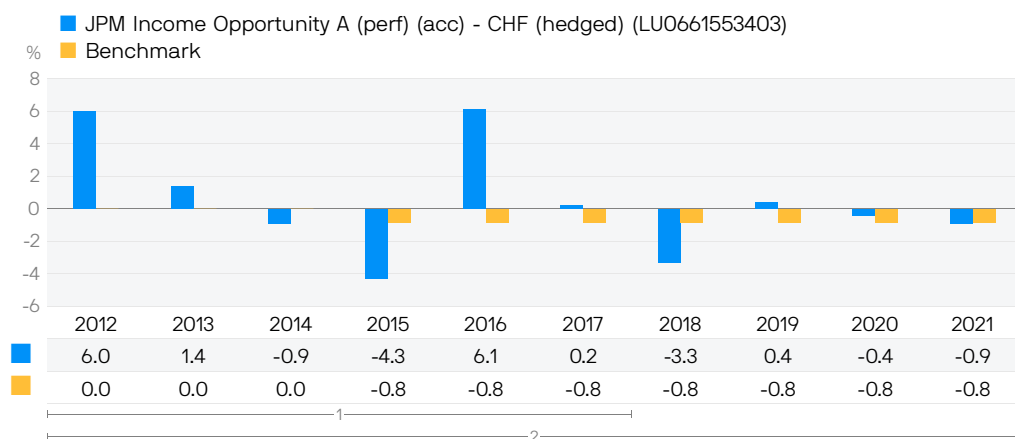
<b>Loss</b> Shareholders could lose some or all of their money.	<b>Volatility</b> Shares of the Sub-Fund will fluctuate in value.	<b>Failure to meet the Sub-Fund's objective.</b>
---	---	--

## Charges

One-off charges taken before or after you invest		
Entry charge	3.00%	This is the maximum that might be taken out of your money before it is invested or before the proceeds of your investment are paid out.
Exit charge	0.50%	
Charges taken from this Share Class over a year		
Ongoing charge	1.20%	The ongoing charge is based on the last year's expenses to November 2021 and may vary from year to year.
Charges taken from this Share Class under certain specific conditions		
Performance fee	20.00%	20.00% a year of any returns this Share Class achieves above the benchmark, ICE BofA SARON Overnight Rate Index.

- The entry and exit charges are the maximum charge and investors may pay less. Information on charges can be obtained from the investor's financial adviser, distributor or any country specific addendum to the Prospectus.
- A switching charge not exceeding 1% of the Net Asset Value of the shares in the new Share Class may be charged.
- Charges are used to pay the costs of running this Share Class, including the costs of marketing and distribution. These charges reduce the potential growth of the investment.
- Further information about charges and specifically about the performance fee and how it is calculated can be found in the "Share Classes and Costs" section of the Prospectus.

## Past Performance



- Past performance is not a guide to future performance.
- Performance data has been calculated including tax, ongoing charges and portfolio transaction costs and excluding entry and exit charges, in CHF.
- Where no past performance is shown there was insufficient data available in that year to provide performance.
- Sub-Fund launch date: 2007.
- Share Class launch date: 2011.

- 1 This performance was achieved under circumstances that may no longer apply.
- 2 A different benchmark was used during this period.

## Practical Information

**Depository** The fund depository is J.P. Morgan SE - Luxembourg Branch.

**Further Information** A copy of the Prospectus and latest annual and semi-annual financial report in English, French, German, Italian, Portuguese and Spanish and the latest Net Asset Value per Share and Bid and Offer Prices are available free of charge upon request from [www.jpmorganassetmanagement.com](http://www.jpmorganassetmanagement.com), by email from [fundinfo@jpmorgan.com](mailto:fundinfo@jpmorgan.com), or by writing to JPMorgan Asset Management (Europe) S.à r.l, 6 route de Trèves, L-2633 Senningerberg, Grand Duchy of Luxembourg.

**Remuneration Policy** The Management Company's Remuneration Policy can be found on <http://www.jpmorganassetmanagement.lu/emea-remuneration-policy>. This policy includes details of how remuneration and benefits are calculated, including responsibilities and composition of the committee which oversees and controls the policy. A copy of this policy can be requested free of charge from the Management Company.

**Tax** The Sub-Fund is subject to Luxembourg tax regulations. This may have an impact on the investor's personal tax position.

**Legal Information** JPMorgan Asset Management (Europe) S.à r.l. may be held liable solely on the basis of any statement contained in this document that is misleading, inaccurate or inconsistent with the relevant parts of the Prospectus.

JPMorgan Investment Funds consists of separate Sub-Funds, each of which issues one or more Share Classes. This document is prepared for

a specific Share Class. The Prospectus and annual and semi-annual financial reports are prepared for JPMorgan Investment Funds.

The Sub-Fund is part of JPMorgan Investment Funds. Under Luxembourg law, there is segregated liability between Sub-Funds. This means that the assets of a Sub-Fund will not be available to meet a claim of a creditor or another third party made against another Sub-Fund.

**Switching** Investors may switch into Shares of another Share Class (excluding a T Share Class or an F Share Class) of the Sub-Fund or another Sub-Fund of JPMorgan Investment Funds subject to meeting any relevant eligibility requirements and minimum holding amounts. Further information can be found in the "Investing in the Sub-Funds" section of the Prospectus.

**Privacy Policy** You should note that, if you contact J.P. Morgan Asset Management by telephone, those lines may be recorded and monitored for legal, security and training purposes. You should also take note that information and data from communications with you may be processed by J.P. Morgan Asset Management, acting as a data controller, in accordance with applicable data protection laws. Further information about processing activities of J.P. Morgan Asset Management can be found in the EMEA Privacy Policy, which is available at [www.jpmorgan.com/emea-privacy-policy](http://www.jpmorgan.com/emea-privacy-policy). Additional copies of the EMEA Privacy Policy are available on request.