

This document provides you with key investor information about this fund. It is not marketing material. The information is required by law to help you understand the nature and the risks of investing in this fund. You are advised to read it so you can make an informed decision about whether to invest.

## Capital International European Growth and Income

This fund is a sub-fund of Capital International Fund. This fund is managed by Capital International Management Company Sàrl, part of The Capital Group Companies.

<b>Class</b>	<b>B EUR</b>
<b>ISIN</b>	<b>LU0157028266</b>
<b>SEDOL</b>	<b>B1KKQF3</b>

### Objectives and investment policy

The fund seeks to achieve long-term growth of capital and income by investing in companies domiciled and/or having their principal place of business in Europe. Preservation of capital is also a priority.

Investors can buy and sell shares of the fund on a daily basis. This fund may only be appropriate for long-term investment.

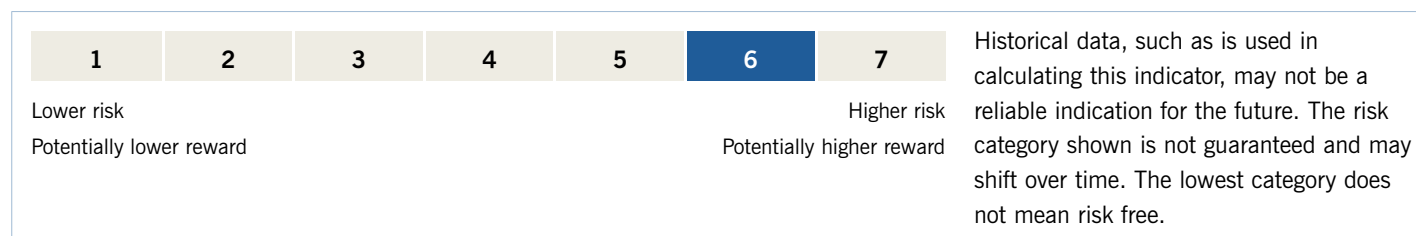
### Essential features

The fund invests primarily in equity of European companies that are admitted to an official listing or dealt in on another regulated market. It normally invests in shares of companies in any country in Europe. It is managed on a stock-by-stock basis without reference to index weighting. It is focused on investing in companies with long-term potential of capital growth and income. Some emerging markets securities may also be purchased. The fund does not use short-selling or leverage.

### Dividends

The shares in this class are accumulating and no dividends are distributed.

### Risk and reward profile



The fund is rated 6 due to the nature of its investments which include the risks listed below. These factors singularly or in combination may impact the value of the fund's investments or expose the fund to losses.

versa. Funds investing in bonds will be exposed to credit risk. Securities which have a lower credit rating are generally considered to have a higher credit risk and a greater possibility of default than more highly rated securities.

■ **Counterparty risk:** Other financial institutions provide services to the fund such as safekeeping of assets or may serve as a counterparty to financial contracts such as derivatives. There is a risk the counterparty will not meet their obligations.

■ **Equities risk:** The prices of equity securities may decline in response to certain events, including those directly involving the companies whose securities are owned by the fund, overall market changes, local, regional or global political, social or economic instability and currency fluctuations.

■ **Liquidity risk:** Some securities, primarily unlisted securities and/or those traded in OTC markets, under certain circumstances may not be traded quickly enough in the market to prevent a loss.

■ **Derivative instruments risk:** While the fund intends to use derivative instruments in a prudent manner and primarily for hedging and/or efficient portfolio management purposes, derivative instruments may expose a fund to additional risks related to the credit risks of the counterparty and potential for increased volatility and reduced liquidity in comparison to the underlying security positions.

■ **Bonds risk:** The market values of bonds generally vary inversely with the level of interest rates – when interest rates rise, their values will tend to decline and vice

■ **Operational risk:** This fund may invest in markets where settlement systems are less well organised than those of developed markets. Thus settlement may be delayed and cash or securities belonging to the fund may be in jeopardy.

## Charges

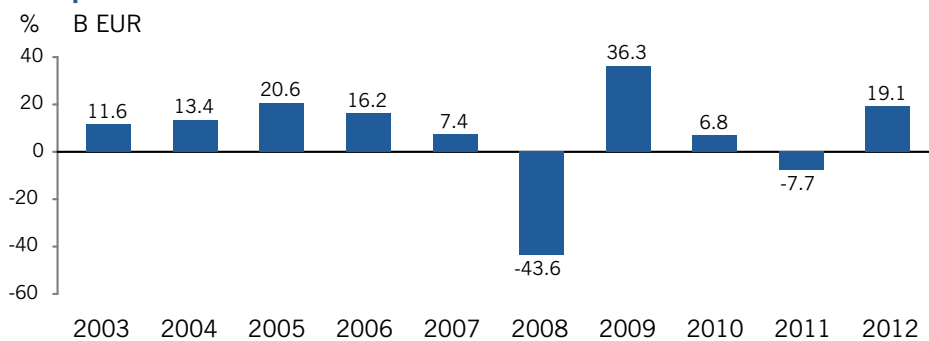
The charges you pay are used to pay the costs of running the fund, including the costs of marketing and distributing it. These charges reduce the potential growth of your investment. Entry and exit charges shown are the maximum that might be taken out of your money. In some cases, you might pay less and you should speak to your financial adviser or distributor about this. Exit charges are only applied when there is excessive trading or market timing.

The ongoing charges are based on expenses for the year ending December 2012. This figure may vary from year to year. It excludes portfolio transaction costs which do affect returns.

For more information about charges, please see the 'Expenses' section in the prospectus and the latest annual or semi-annual reports, available at [capitalinternational.com](http://capitalinternational.com).

<b>One-off charges taken before or after you invest</b>	
Entry charge	5.25%
Exit charge	2.00%
This is the maximum that might be taken out of your money before it is invested and/or before the proceeds of your investment are paid out.	
<b>Charges taken from the fund over a year</b>	
Ongoing charges	1.76%
<b>Charges taken from the fund under certain specific conditions</b>	
Performance fee	None

## Past performance



The fund was launched on 30 October 2002.

Returns have been calculated in EUR after all ongoing charges, but not allowing for any entry or exit charges. Past performance is not a guide to future returns.

## Practical information

### How to transact

Individuals are encouraged to invest with the assistance of an adviser, who will be able to help with subscriptions, switches and redemptions. Individuals who do wish to invest directly should contact us to obtain an Account Opening Form and Transaction Request Form.

### To obtain more information

For the prospectus, latest annual and semi-annual reports (available in English free of charge), other shares classes and latest daily prices, please visit: [capitalinternational.com](http://capitalinternational.com).

### Contact information

#### Capital International Funds Services

Call 00 800 243 38637 toll free in EU and Switzerland (9am to 6pm CET).

From outside the EU and Switzerland tel +352 46 26 85 611 or fax +352 22 74 43.

### Notices

The fund is domiciled in the Grand Duchy of Luxembourg. Your tax treatment will depend on your taxation status in your country of residence. Please contact your adviser for further details.

Capital International Management Company Sàrl may be held liable solely on the basis of any statement contained in this document that is misleading, inaccurate or inconsistent with the relevant parts of the prospectus for the fund.

### Depository

J.P. Morgan Bank Luxembourg S.A.