

DWS CIO View Balance LC / DE0008474198 / 847419 / DWS Investment GmbH

Last 12/12/2025 ¹	Region	Branch	Type of yield	Type
146.40 EUR	Worldwide	Mixed fund/flexible	reinvestment	Mixed Fund



Risk key figures

SRI 1 2 3 4 5 6 7

Mountain-View Funds Rating²

EDA³ 74

Yearly Performance

2024	+10.75%
2023	+9.47%
2022	-11.65%
2021	+10.02%
2020	+2.23%

Master data		Conditions		Other figures	
Fund type	Single fund	Issue surcharge	4.00%	Minimum investment	UNT 0
Category	Mixed Fund	Planned administr. fee	0.00%	Savings plan	Yes
Sub category	Mixed fund/flexible	Deposit fees	0.00%	UCITS / OGAW	Yes
Fund domicile	Germany	Redemption charge	0.00%	Performance fee	0.00%
Tranch volume	(12/12/2025) EUR 286.24 mill.	Ongoing charges	-	Redeployment fee	0.00%
Total volume	(12/11/2025) EUR 285.47 mill.	Dividends		Investment company	
Launch date	10/14/1993	02.01.2018	0.40 EUR	DWS Investment GmbH Mainzer Landstraße 11-17, 60329, Frankfurt am Main Germany https://www.dws.de	
KEST report funds	Yes	02.10.2017	0.31 EUR		
Business year start	01.10.	04.10.2016	0.62 EUR		
Sustainability type	-	01.10.2015	0.44 EUR		
Fund manager	Michael Ficht, Johannes Prix, Max Scheufler	01.10.2014	0.41 EUR		

Performance	1M	6M	YTD	1Y	2Y	3Y	5Y	Since start
Performance	-0.47%	+6.27%	+6.44%	+4.21%	+19.84%	+27.06%	+26.38%	+575.77%
Performance p.a.	-	-	-	+4.21%	+9.46%	+8.30%	+4.80%	+6.12%
Sharpe ratio	-1.11	2.27	0.62	0.28	1.10	0.97	0.40	0.42
Volatility	6.87%	4.77%	7.74%	7.72%	6.73%	6.42%	6.85%	9.58%
Worst month	-	0.03%	-3.39%	-3.39%	-3.39%	-3.39%	-5.17%	-10.41%
Best month	-	2.20%	2.76%	2.76%	3.39%	4.97%	4.97%	10.59%
Maximum loss	-2.52%	-2.52%	-10.66%	-10.66%	-10.66%	-10.66%	-14.34%	-

Distribution permission

Austria, Germany, Switzerland

¹ Important note on update status: The displayed date refers exclusively to the calculation of the NAV.

² The Mountain-View Data Fund Rating calculates a comparative ranking for funds using yield, volatility and trend data. For more information visit [MVD Funds Rating](#)

³ Displays the Ethical-Dynamical Ratio calculated according to standard criteria. The maximum value is 100. For more information visit [EDA](#)

DWS CIO View Balance LC / DE0008474198 / 847419 / DWS Investment GmbH

Investment strategy

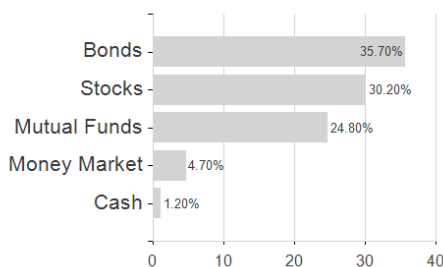
To achieve this, the fund invests in interest-bearing securities, equities, certificates, funds and banks balances. At least 35% of the investment fund's assets must be invested in interest-bearing securities such as government bonds, corporate bonds or convertible bonds of domestic and foreign issuers, in certificates on bonds or bond indices or in bond funds. Of this portion, at least 51% of the corresponding investment ratio must be invested in securities that are denominated in euro or hedged against the euro and have investment grade status at the time the securities are purchased. Up to 65% of the investment fund's assets may be invested in equities, equity funds and/or equity certificates. Up to 10% of the investment fund's assets may be invested in certificates on commodities and commodity indices. Up to 49% of the fund's assets may be invested in money market instruments, money market funds and money market funds with short maturity structures or bank balances, respectively.

Investment goal

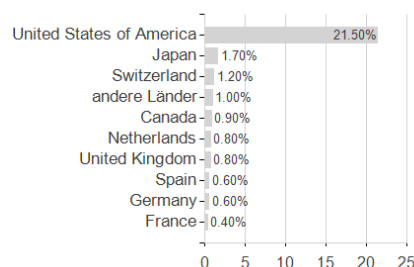
The fund is actively managed. The fund is not managed in reference to a benchmark. The fund promotes environmental and social characteristics and is subject to the disclosure requirements of a financial product in accordance with article 8(1) of Regulation (EU) 2019/2088 on sustainability-related disclosures in the financial services sector. The objective of the investment policy is to achieve the highest possible appreciation of capital.

Assessment Structure

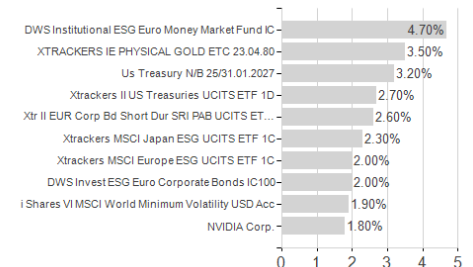
Assets



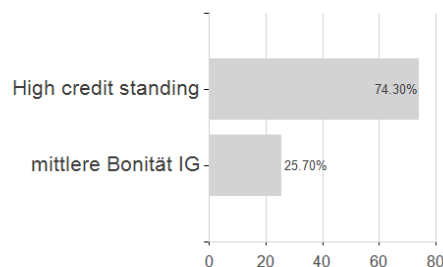
Countries



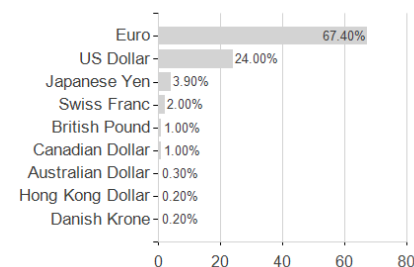
Largest positions



Rating



Currencies



Branches

