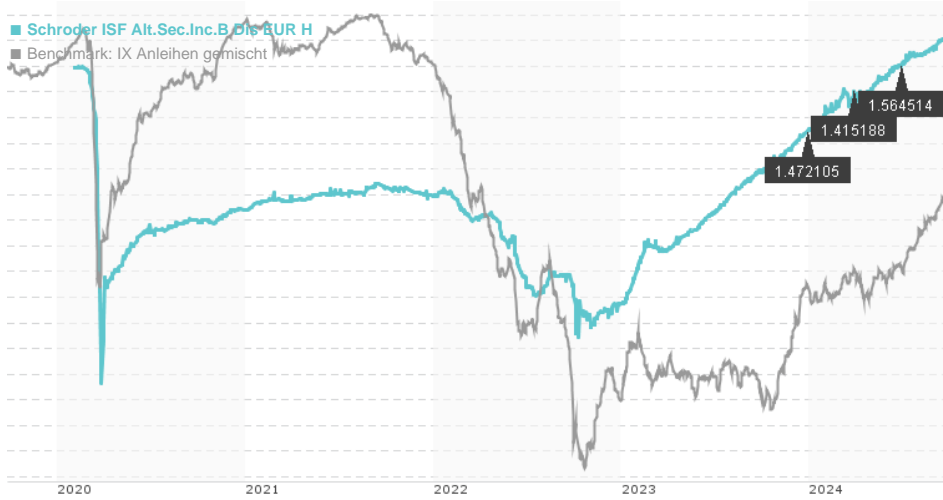


Schroder ISF Alt.Sec.Inc.B Dis EUR H / LU2107321106 / A2PZMB / Schroder IM (EU)

Last 09/25/2024 <sup>1</sup>	Region	Branch	Type of yield	Type
83.38 EUR	Worldwide	Bonds: Mixed	paying dividend	Fixed-Income Fund



Risk key figures

SRI	1	2	3	4	5	6	7
-----	---	---	---	---	---	---	---

Mountain-View Funds Rating<sup>2</sup> EDA<sup>3</sup>



Yearly Performance

2023	+7.40%
2022	-4.43%
2021	+0.58%

Master data		Conditions		Other figures	
Fund type	Single fund	Issue surcharge	0.00%	Minimum investment	EUR 1,000.00
Category	Bonds	Planned administr. fee	0.00%	Savings plan	-
Sub category	Bonds: Mixed	Deposit fees	0.30%	UCITS / OGAW	Yes
Fund domicile	Luxembourg	Redemption charge	0.00%	Performance fee	0.00%
Tranch volume	(09/25/2024) USD 0.011 mill.	Ongoing charges	-	Redeployment fee	0.00%
Total volume	(09/25/2024) USD 1,025.79 mill.	<b>Dividends</b>		<b>Investment company</b>	
Launch date	2/4/2020	27.06.2024	1.56 EUR	Schroder IM (EU)	
KESr report funds	Yes	28.03.2024	1.42 EUR	5, rue Höhenhof, 1736, Senningerberg	
Business year start	01.01.	28.12.2023	1.47 EUR	Luxembourg	
Sustainability type	-	28.09.2023	1.67 EUR	https://www.schroders.com	
Fund manager	Michelle Russell-Dowe	15.06.2023	1.30 EUR		

Performance	1M	6M	YTD	1Y	2Y	3Y	5Y	Since start
Performance	+0.38%	+2.36%	+3.72%	+5.36%	+10.22%	+6.04%	-	+1.13%
Performance p.a.	-	-	-	+5.34%	+4.99%	+1.98%	-	+0.24%
Sharpe ratio	2.16	1.07	1.19	1.46	0.66	-0.69	-	-1.05
Volatility	0.62%	1.21%	1.41%	1.32%	2.36%	2.11%	0.00%	3.04%
Worst month	-	0.09%	0.09%	0.09%	-0.89%	-1.93%	-9.72%	-9.72%
Best month	-	0.53%	0.66%	0.66%	1.42%	1.42%	2.24%	2.24%
Maximum loss	-0.10%	-0.38%	-0.66%	-0.66%	-2.45%	-6.15%	0.00%	-

Distribution permission

Austria, Germany, Switzerland, Czech Republic

<sup>1</sup> Important note on update status: The displayed date refers exclusively to the calculation of the NAV.

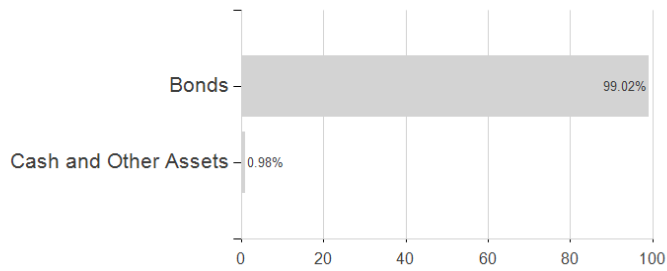
<sup>2</sup> The Mountain-View Data Fund Rating calculates a comparative ranking for funds using yield, volatility and trend data. For more information visit [MVD Funds Rating](#)

<sup>3</sup> Displays the Ethical-Dynamical Ratio calculated according to standard criteria. The maximum value is 100. For more information visit [EDA](#)

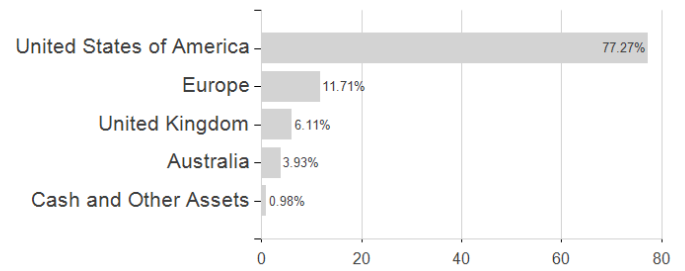
**Schroder ISF Alt.Sec.Inc.B Dis EUR H / LU2107321106 / A2PZMB / Schroder IM (EU)**

Assessment Structure

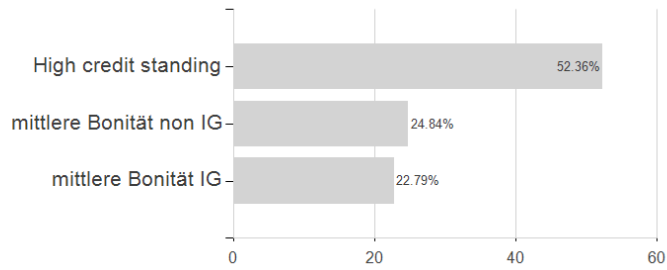
Assets



Countries



Rating



Issuer

