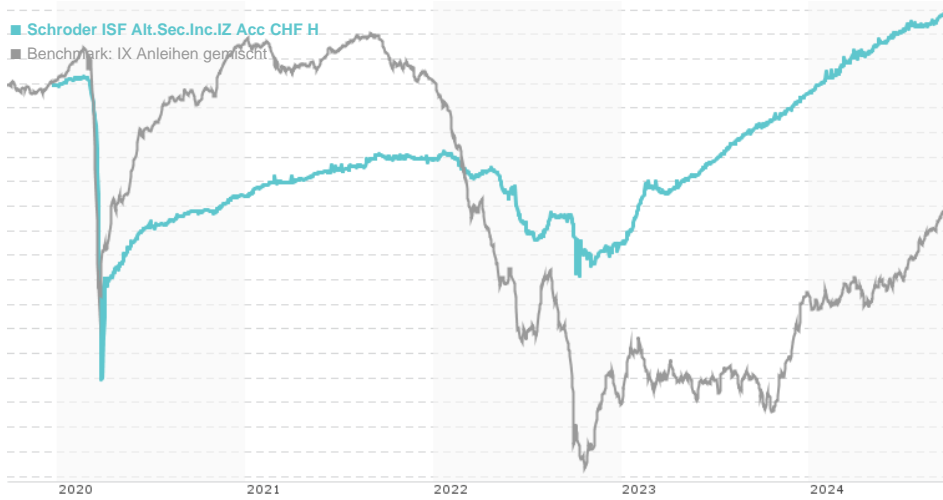


Schroder ISF Alt.Sec.Inc.IZ Acc CHF H / LU2084127955 / A2PXE9 / Schroder IM (EU)

Last 09/24/2024 ¹	Region	Branch	Type of yield	Type
102.73 CHF	Worldwide	Bonds: Mixed	reinvestment	Fixed-Income Fund



Risk key figures

SRI	1	2	3	4	5	6	7
Mountain-View Funds Rating ²	EDA ³						
	▲▲▲▲▲▲▲						

Yearly Performance

2023	+6.50%
2022	-3.52%
2021	+1.56%
2020	-4.50%

Master data		Conditions		Other figures	
Fund type	Single fund	Issue surcharge	0.00%	Minimum investment	USD 100,000,000.00
Category	Bonds	Planned administr. fee	0.00%	Savings plan	-
Sub category	Bonds: Mixed	Deposit fees	0.30%	UCITS / OGAW	Yes
Fund domicile	Luxembourg	Redemption charge	0.00%	Performance fee	0.00%
Tranch volume	(09/24/2024) USD 0.012 mill.	Ongoing charges	-	Redeployment fee	0.00%
Total volume	(09/24/2024) USD 1,024.24 mill.	Dividends		Investment company	
Launch date	12/17/2019	Schroder IM (EU)			
KEST report funds	Yes	5, rue Höhenhof, 1736, Senningerberg			
Business year start	01.01.	Luxembourg			
Sustainability type	-	https://www.schroders.com			
Fund manager	Michelle Russell-Dowe				

Performance	1M	6M	YTD	1Y	2Y	3Y	5Y	Since start
Performance	+0.25%	+1.63%	+3.23%	+4.52%	+8.79%	+5.92%	-	+2.83%
Performance p.a.	-	-	-	+4.52%	+4.31%	+1.93%	-	+0.59%
Sharpe ratio	-0.32	-0.13	0.74	0.84	0.37	-0.71	-	-0.95
Volatility	0.67%	1.26%	1.38%	1.30%	2.35%	2.10%	0.00%	3.00%
Worst month	-	0.00%	0.00%	0.00%	-0.83%	-1.76%	-9.66%	-9.66%
Best month	-	0.87%	0.87%	0.87%	1.40%	1.40%	2.32%	2.32%
Maximum loss	-0.12%	-0.37%	-0.37%	-0.37%	-2.46%	-5.23%	0.00%	-

Distribution permission

Austria, Germany, Switzerland, Czech Republic

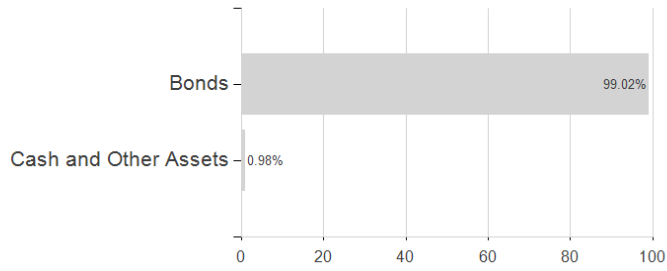
¹ Important note on update status: The displayed date refers exclusively to the calculation of the NAV.
² The Mountain-View Data Fund Rating calculates a comparative ranking for funds using yield, volatility and trend data. For more information visit [MVD Funds Rating](#)

Schroder ISF Alt.Sec.Inc.IZ Acc CHF H / LU2084127955 / A2PXE9 / Schroder IM (EU)

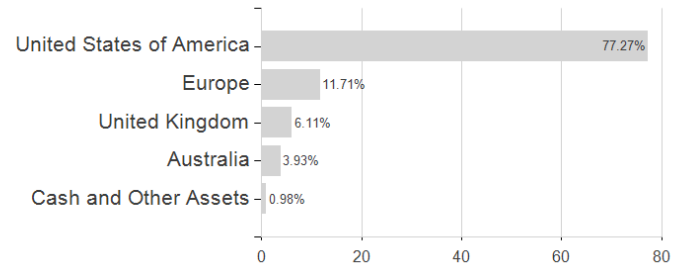
3 Displays the Ethical-Dynamical Ratio calculated according to standard criteria. The maximum value is 100. For more information visit [EDA](#)

Assessment Structure

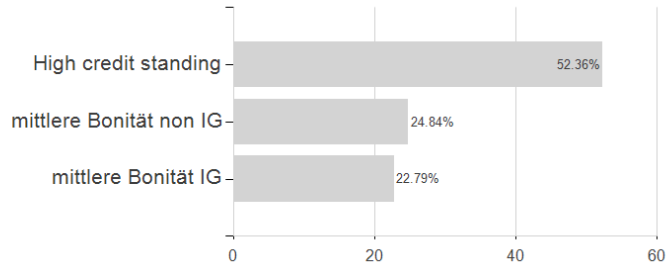
Assets



Countries



Rating



Issuer

