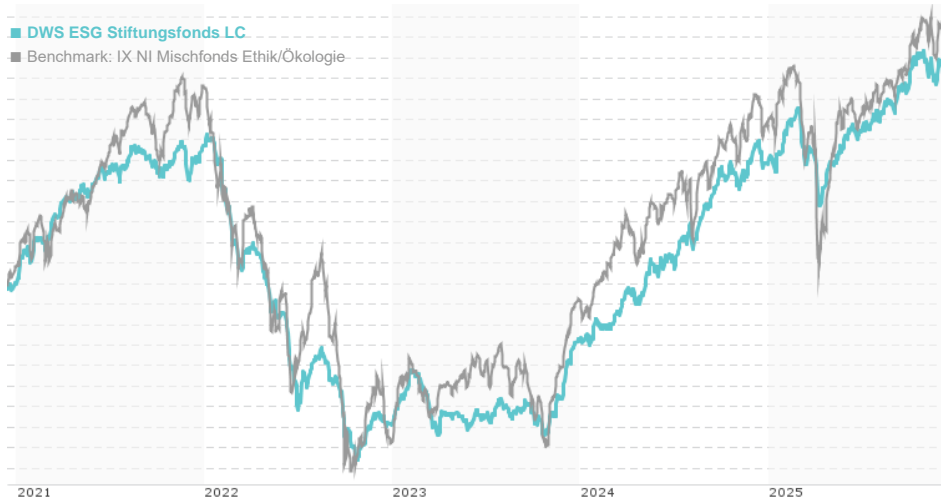


DWS ESG Stiftungsfonds LC / DE000DWS22Q5 / DWS22Q / DWS Investment GmbH

Last 12/11/2025 ¹	Region	Branch	Type of yield	Type
114.85 EUR	Worldwide	Mixed Fund/Focus Bonds	reinvestment	Mixed Fund

DWS ESG Stiftungsfonds LC

■ Benchmark: IX NI Mischfonds Ethik/Ökologie



Risk key figures

SRI 1 2 3 4 5 6 7

Mountain-View Funds Rating²

EDA³ 85

Yearly Performance

2024	+8.76%
2023	+4.38%
2022	-12.65%
2021	+6.68%
2020	+0.57%

Master data		Conditions		Other figures	
Fund type	Single fund	Issue surcharge	3.00%	Minimum investment	UNT 0
Category	Mixed Fund	Planned administr. fee	0.00%	Savings plan	-
Sub category	Mixed Fund/Focus Bonds	Deposit fees	0.00%	UCITS / OGAW	Yes
Fund domicile	Germany	Redemption charge	0.00%	Performance fee	0.00%
Tranch volume	(12/11/2025) EUR 1.50 mill.	Ongoing charges	-	Redeployment fee	0.00%
Total volume	(12/11/2025) EUR 963.59 mill.	Dividends		Investment company	
Launch date	7/1/2019	DWS Investment GmbH			
KESr report funds	Yes	Mainzer Landstraße 11-17, 60329, Frankfurt am Main			
Business year start	01.01.	Germany			
Sustainability type	Ethics/ecology	https://www.dws.de			
Fund manager	Diebel, Markus				

Performance	1M	6M	YTD	1Y	2Y	3Y	5Y	Since start
Performance	+0.13%	+2.76%	+4.55%	+3.50%	+15.06%	+18.57%	+10.72%	+14.85%
Performance p.a.	-	-	-	+3.50%	+7.25%	+5.84%	+2.06%	+2.17%
Sharpe ratio	-0.13	1.20	0.87	0.45	1.70	1.30	-0.01	0.02
Volatility	3.56%	2.91%	3.17%	3.16%	3.04%	2.89%	3.05%	3.79%
Worst month	-	-0.25%	-2.14%	-2.14%	-2.14%	-2.49%	-4.67%	-8.95%
Best month	-	1.08%	1.44%	1.44%	2.27%	2.48%	2.48%	4.84%
Maximum loss	-1.13%	-1.44%	-4.36%	-4.36%	-4.36%	-4.36%	-14.81%	-

Distribution permission

Austria, Germany, Switzerland

¹ Important note on update status: The displayed date refers exclusively to the calculation of the NAV.

² The Mountain-View Data Fund Rating calculates a comparative ranking for funds using yield, volatility and trend data. For more information visit [MVD Funds Rating](#)

³ Displays the Ethical-Dynamical Ratio calculated according to standard criteria. The maximum value is 100. For more information visit [EDA](#)

DWS ESG Stiftungsfonds LC / DE000DWS22Q5 / DWS22Q / DWS Investment GmbH

Investment strategy

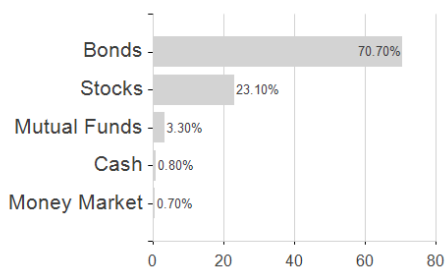
To achieve this, the fund invests in equities, interest-bearing securities, convertible debentures, warrant-linked bonds, warrants, dividend-right certificates (Genussscheine) and index certificates of domestic and foreign issuers. At least 51% of the fund comprises mortgage bonds, municipal bonds or other bearer bonds issued in a member state of the European Union or in another state that is a party to the Agreement on the European Economic Area. When selecting the suitable investments, environmental and social aspects as well as the principles of corporate governance ("ESG standards") are of key importance for the implementation of the fund's sustainable investment strategy.

Investment goal

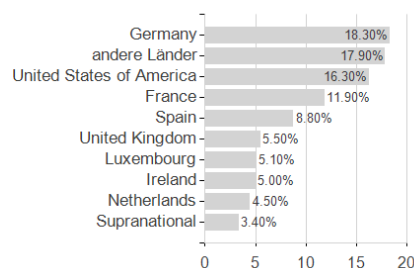
The fund is actively managed. The fund is not managed in reference to a benchmark. The fund promotes environmental and social characteristics and is subject to the disclosure requirements of a financial product in accordance with article 8(1) of Regulation (EU) 2019/2088 on sustainability-related disclosures in the financial services sector. More ESG information is available in the sales prospectus and on the DWS website. The objective of the investment policy is to generate capital appreciation.

Assessment Structure

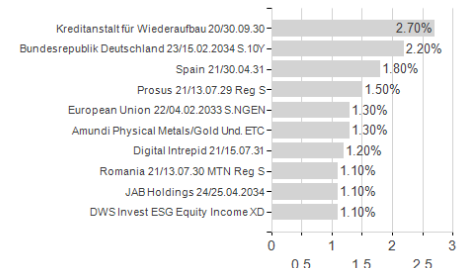
Assets



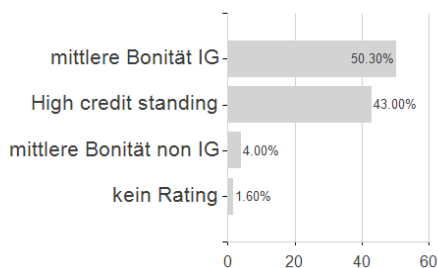
Countries



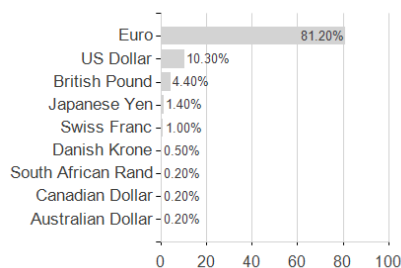
Largest positions



Rating



Currencies



Branches

