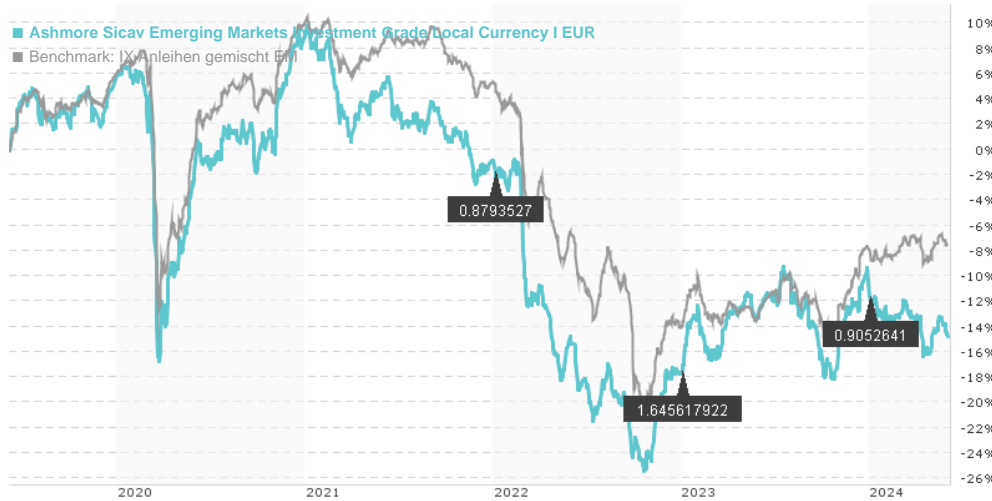


Ashmore Sicav Emerging Markets Investment Grade Local Currency I EUR / LU0640448188 / A1JCAK / Ashmore IM

Last 06/03/2024 ¹	Region	Branch	Type of yield	Type
43.27 EUR	Emerging Markets	Bonds: Mixed	paying dividend	Fixed-Income Fund



Risk key figures

SRI 1 2 3 4 5 6 7

Mountain-View Funds Rating²EDA³

Yearly Performance

2023	+10.14%
2022	-16.91%
2021	-9.08%
2020	+2.96%
2019	+7.91%

Master data		Conditions		Other figures	
Fund type	Single fund	Issue surcharge	5.00%	Minimum investment	USD 1,000,000.00
Category	Bonds	Planned administr. fee	0.00%	Savings plan	-
Sub category	Bonds: Mixed	Deposit fees	0.01%	UCITS / OGAW	Yes
Fund domicile	Luxembourg	Redemption charge	0.00%	Performance fee	0.00%
Tranch volume	(06/03/2024) EUR 1.67 mill.	Ongoing charges	-	Redeployment fee	0.00%
Total volume	(06/03/2024) EUR 5.48 mill.	Dividends		Investment company	
Launch date	6/20/2011	02.01.2024	0.91 EUR	Ashmore IM (IE) 61 Aldwych, WC2B 4AE, London Ireland www.ashmoregroup.com	
KESr report funds	Yes	03.01.2023	1.65 EUR		
Business year start	01.01.	04.01.2022	0.88 EUR		
Sustainability type	-	04.01.2021	1.60 EUR		
Fund manager	Ashmore Investment Management Limited	02.01.2020	2.34 EUR		

Performance	1M	6M	YTD	1Y	2Y	3Y	5Y	Since start
Performance	-0.02%	-2.77%	-6.02%	-2.77%	+0.67%	-18.73%	-13.86%	-35.78%
Performance p.a.	-	-	-	-2.78%	+0.33%	-6.67%	-2.94%	-3.79%
Sharpe ratio	-0.69	-1.29	-2.57	-0.87	-0.45	-1.33	-0.78	-0.82
Volatility	5.88%	7.18%	6.82%	7.56%	7.68%	7.90%	8.68%	9.19%
Worst month	-	-3.63%	-3.63%	-4.62%	-5.24%	-5.81%	-13.52%	-13.52%
Best month	-	3.69%	3.69%	5.69%	6.93%	6.93%	6.93%	8.15%
Maximum loss	-1.82%	-7.81%	-5.35%	-9.73%	-11.97%	-29.52%	-32.16%	-

Distribution permission

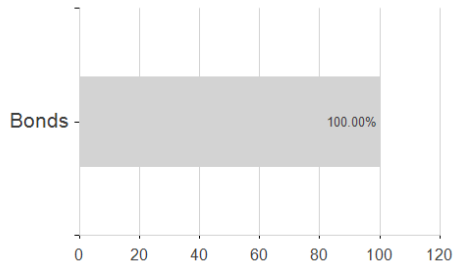
Austria, Germany, Switzerland, United Kingdom

¹ Important note on update status: The displayed date refers exclusively to the calculation of the NAV.² The Mountain-View Data Fund Rating calculates a comparative ranking for funds using yield, volatility and trend data. For more information visit [MVD Funds Rating](#)³ Displays the Ethical-Dynamical Ratio calculated according to standard criteria. The maximum value is 100. For more information visit [EDA](#)

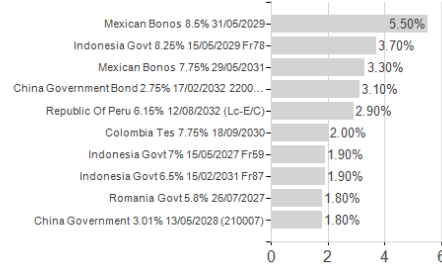
Ashmore Sicav Emerging Markets Investment Grade Local Currency I EUR / LU0640448188 / A1JCAK / Ashmore IM

Assessment Structure

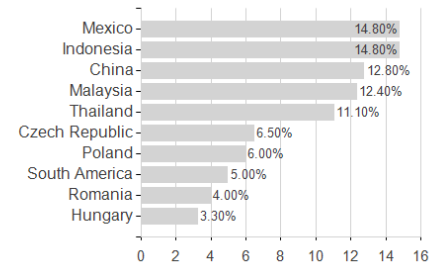
Assets



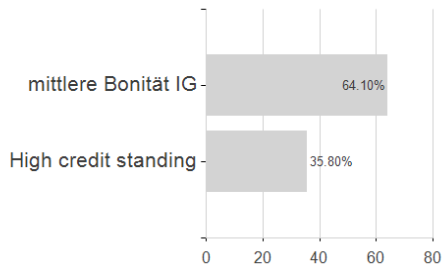
Largest positions



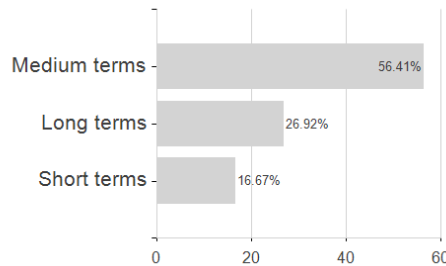
Countries



Rating



Duration



Currencies

