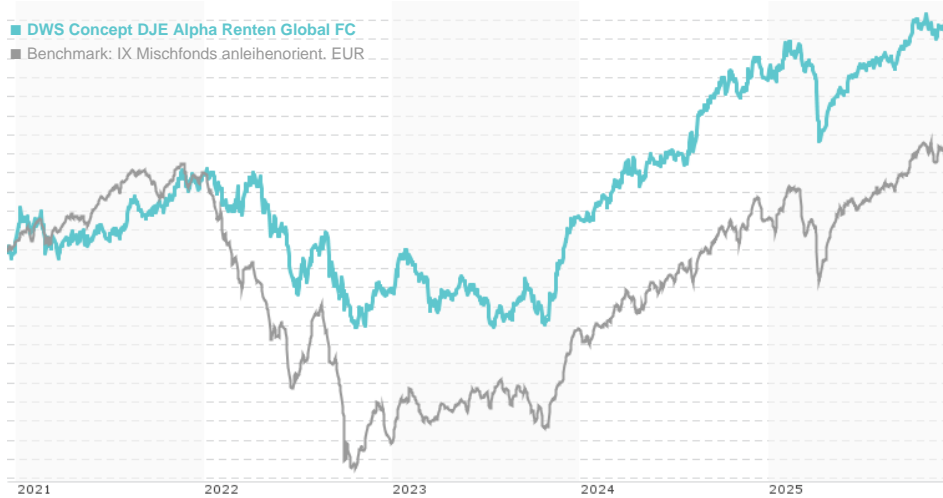


DWS Concept DJE Alpha Renten Global FC / LU0828132174 / DWS1TJ / DWS Investment S.A.

Last 12/11/2025 ¹	Region	Branch	Type of yield	Type
150.14 EUR	Worldwide	Mixed Fund/Focus Bonds	reinvestment	Mixed Fund

■ DWS Concept DJE Alpha Renten Global FC
■ Benchmark: IX Mischfonds anleihenorient. EUR



Risk key figures

SRI 1 2 3 4 5 6 7

Mountain-View Funds Rating²

EDA³ 77

Yearly Performance

2024	+6.98%
2023	+3.91%
2022	-5.72%
2021	+3.24%
2020	+6.93%

Master data		Conditions		Other figures	
Fund type	Single fund	Issue surcharge	0.00%	Minimum investment	EUR 2,000,000.00
Category	Mixed Fund	Planned administr. fee	0.00%	Savings plan	Yes
Sub category	Mixed Fund/Focus Bonds	Deposit fees	0.00%	UCITS / OGAW	Yes
Fund domicile	Luxembourg	Redemption charge	0.00%	Performance fee	0.00%
Tranch volume	(12/11/2025) EUR 40.69 mill.	Ongoing charges	-	Redeployment fee	0.00%
Total volume	(12/11/2025) EUR 560.65 mill.	Dividends		Investment company	
Launch date	12/3/2012	DWS Investment S.A.			
KESr report funds	Yes	2 Boulevard Konrad Adenauer, L-1115, Luxembourg			
Business year start	01.07.	Luxembourg			
Sustainability type	-	www.dws.com			
Fund manager	DJE Kapital AG				

Performance	1M	6M	YTD	1Y	2Y	3Y	5Y	Since start
Performance	-0.21%	+2.27%	+2.47%	+1.36%	+10.54%	+14.17%	+11.72%	+50.14%
Performance p.a.	-	-	-	+1.36%	+5.13%	+4.52%	+2.24%	+3.17%
Sharpe ratio	-1.54	1.04	0.16	-0.22	0.93	0.70	0.04	0.27
Volatility	2.96%	2.39%	3.34%	3.29%	3.29%	3.47%	3.88%	4.07%
Worst month	-	-0.19%	-1.53%	-1.53%	-1.53%	-1.72%	-3.44%	-3.71%
Best month	-	1.27%	1.27%	1.27%	1.92%	3.87%	3.87%	3.87%
Maximum loss	-0.78%	-1.12%	-4.69%	-4.69%	-4.69%	-4.69%	-7.97%	-

Distribution permission

Austria, Germany, Switzerland, Luxembourg

¹ Important note on update status: The displayed date refers exclusively to the calculation of the NAV.

² The Mountain-View Data Fund Rating calculates a comparative ranking for funds using yield, volatility and trend data. For more information visit [MVD Funds Rating](#)

³ Displays the Ethical-Dynamical Ratio calculated according to standard criteria. The maximum value is 100. For more information visit [EDA](#)

DWS Concept DJE Alpha Renten Global FC / LU0828132174 / DWS1TJ / DWS Investment S.A.

Investment strategy

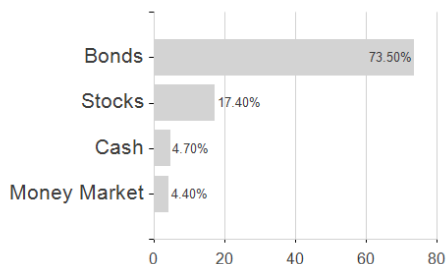
To achieve this, the fund invests mainly in interest-bearing securities, bond-like dividend-right certificates, money market instruments, convertible bonds and warrant-linked bonds. In addition, up to 20% of the fund's assets may be invested in equities. Up to 10% of the fund's net assets may be invested in warrants on securities. Up to 10% of the fund may be invested in certificates, structured financial products and funds based on commodities, commodity indices, precious metals or precious metal indices, as long as there is no physical delivery of commodities or precious metals. In addition to financial strength, there is also a focus on environmental, social and corporate governance factors ("ESG criteria") when selecting investments.

Investment goal

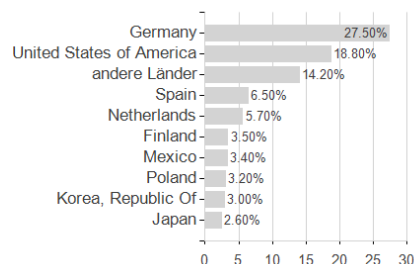
The fund is actively managed. The fund is not managed in reference to a benchmark. The fund promotes environmental and social characteristics and is subject to the disclosure requirements of a financial product in accordance with article 8(1) of Regulation (EU) 2019/2088 on sustainability-related disclosures in the financial services sector. More ESG information is available in the sales prospectus and on the DWS website. The objective of the investment policy is to generate capital appreciation.

Assessment Structure

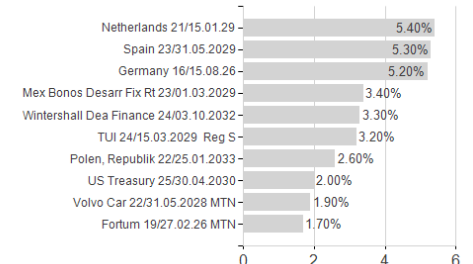
Assets



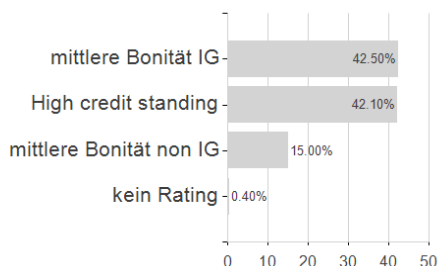
Countries



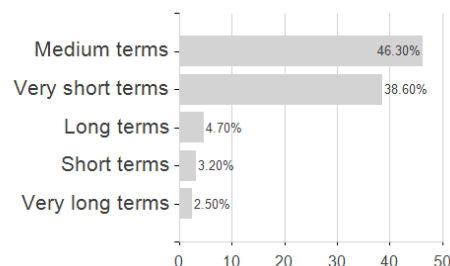
Largest positions



Rating



Duration



Currencies

